

Learning to Lead as Professional School Counselors in Race, Equity & Social Justice

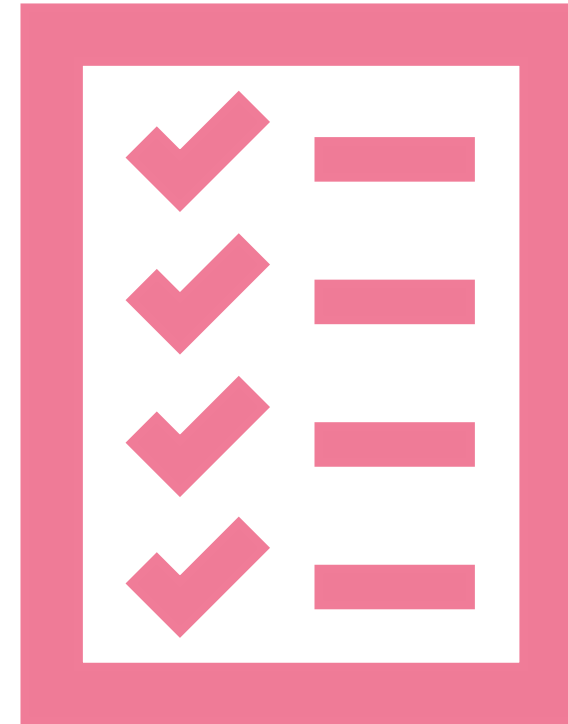
October 28, 2020

Carrie Wilbert, MS, CRC, tLMHC



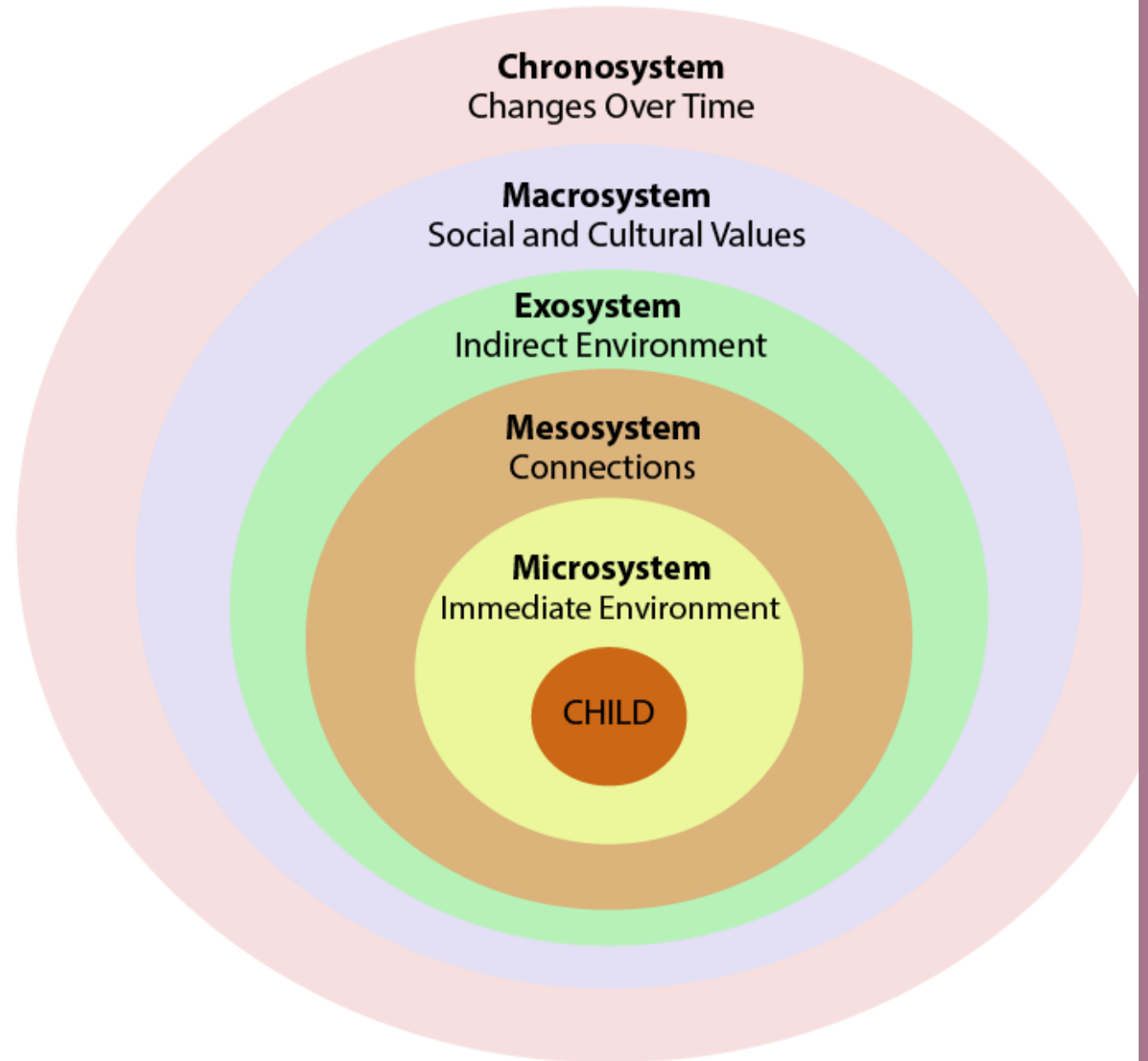
Agenda

1. Review Brofenbrenner's Ecological Theory
2. Mapping your Issue
3. Future leadership goals



Bronfenbrenner's Ecological Theory

Bronfenbrenner's Ecological Systems Theory



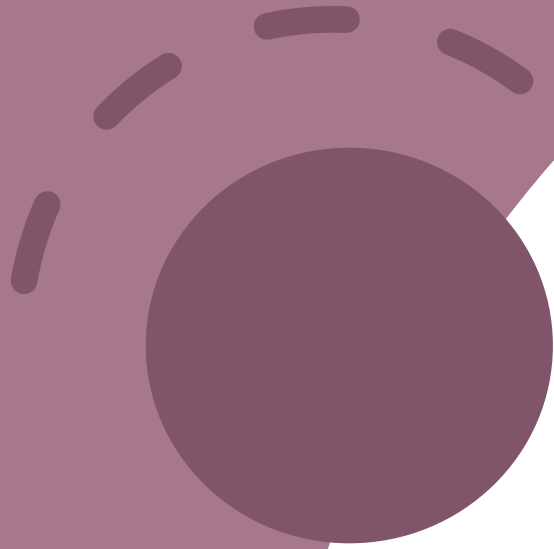
Systems

- **Micro system:** Immediate environment; student's family, friends, teachers, neighbors
- **Meso system:** Connections between micro systems; parent and teacher; church and neighborhood
- **Exo system:** Not directly connected; parent workplace schedules; community-based family resources
- **Macro system:** Social and Cultural Values; Culture, SES, Race/Ethnicity
- **Chrono system:** Socio-historical influences by time; COVID; divorce

Where have you seen your supervisor interact with the different systems?

**Map your Issue
using
Bronfenbrenner's
Ecological Theory**



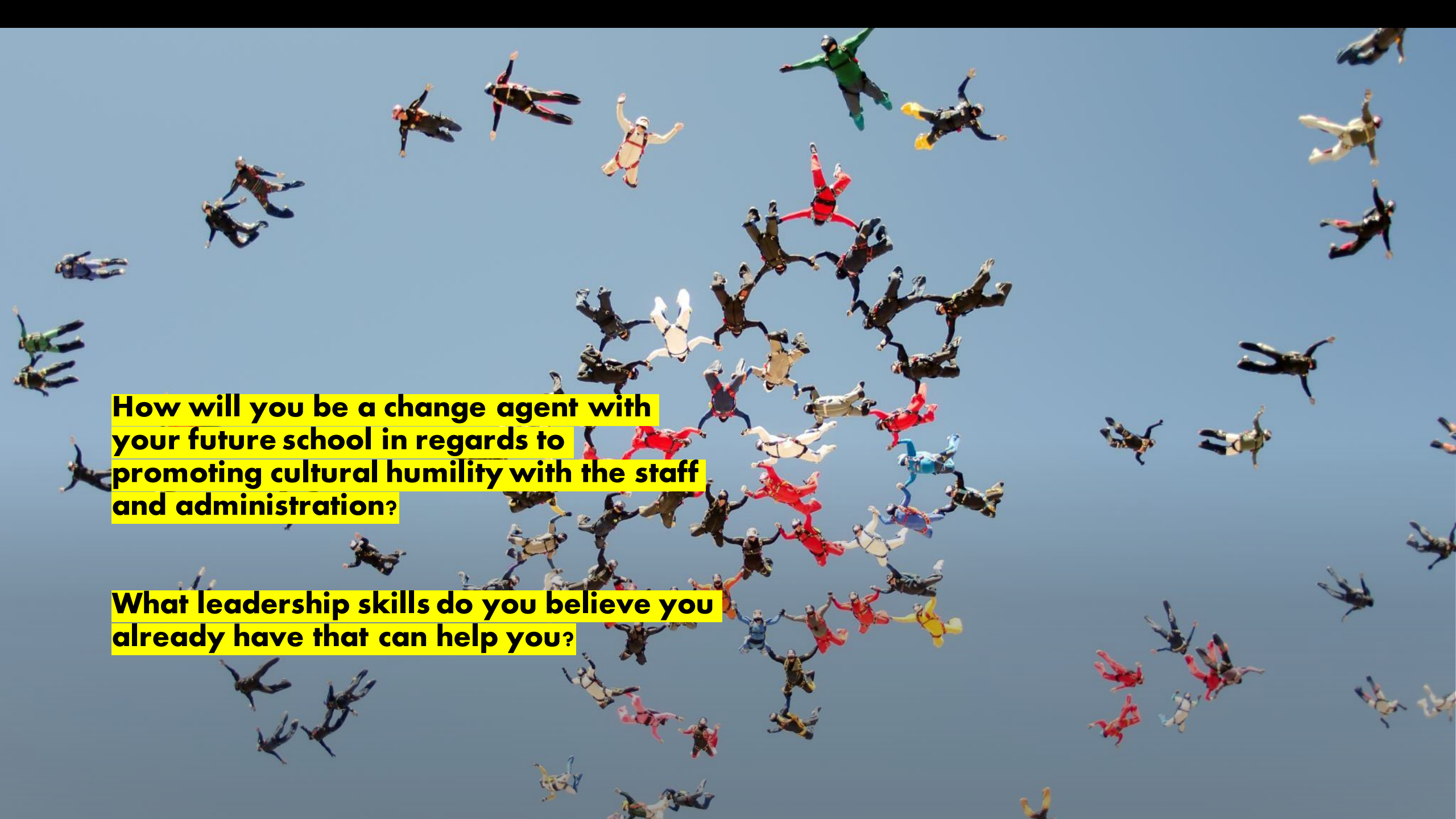


Consider the resistance faced when influencing system change.

Identify early adopters, collaborators, and stakeholders.

Ask
Which groups have more power?

Which groups have less power?



How will you be a change agent with your future school in regards to promoting cultural humility with the staff and administration?

What leadership skills do you believe you already have that can help you?